

Mounting Instructions for HONDA® GL 1800 Leg Wings™

1. Remove nut and screw from Black Plastic Clamps.
2. Place clamps loosely around Engine Guard as shown in Photo #2 and ILL. #1.
3. Position Deflector in place as shown in Photo #1.
4. Insert long steel screw with snap cap base thru thick black washer, then thru deflector panel, then thru black plastic clamp as shown in ILL. #1 and Photo #2.
5. Install cap nuts and snap caps.
6. Make sure you have Adequate Clearance between Deflector and Fairing before tightening nuts.

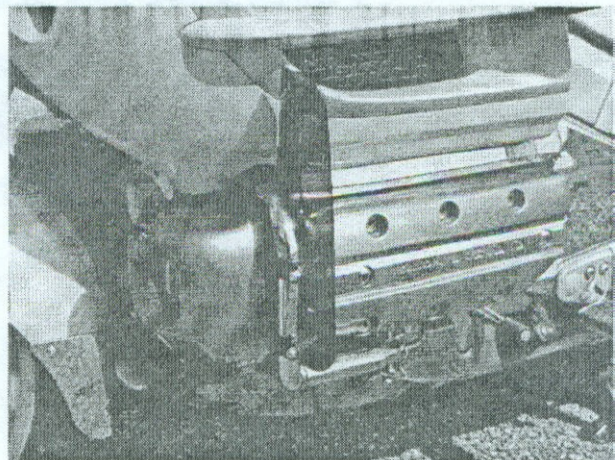


PHOTO #1

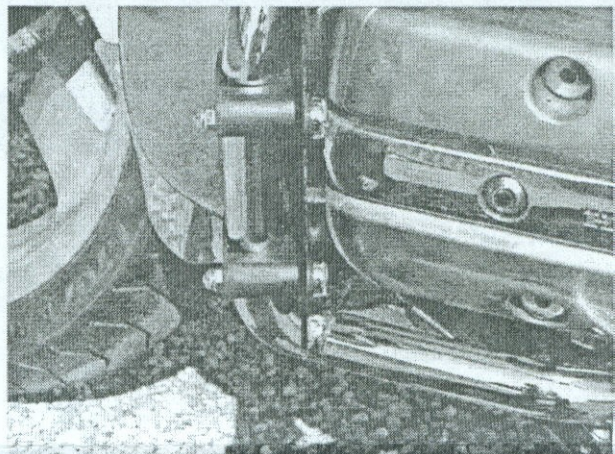


PHOTO #2

NOTE: DO NOT OVER TIGHTEN CAP NUT; ½ turn past finger tight should be sufficient.

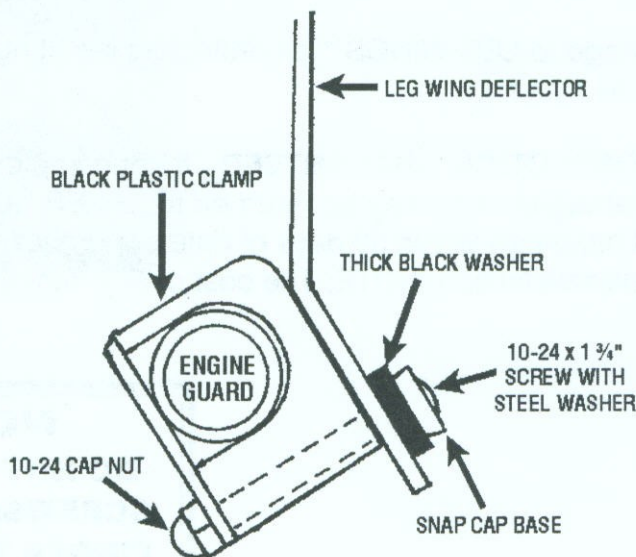
(Extra hole in inside tab of Leg Wing™ Deflector is not used in installation; it is for manufacturing purposes only)

LEAVE ON YEAR ROUND

The LEG WINGS™ keep you warmer and dryer in cold and wet weather by deflecting cold airflow away from legs, feet and ankles

Prevents Hot Air from Lower Radiator from blowing back on Rider and Co-Rider.

CAUTION: Fumes from gasoline, paint or other chemicals stored around the cycle can cause the plexiglass to crack or deteriorate. Do not use cleaners containing ammonia to clean the plexiglass. **DO NOT** use Loctite or similar products on screws. Brake or Clutch fluid leaks will immediately ruin the plexiglass.



ILL. #1: TOP VIEW OF LEFT SIDE



BAKER BUILT™ AIR WINGS™, INC.

11877 Walnut Grove Church Rd., Ohio City, Ohio 45874

Phone: 1-800-451-WING(9464) or (419) 965-2646 FAX: (419) 965-2646

www.bakerbuilt.com e-mail: info@bakerbuilt.com



MADE IN THE U.S.A.